

A WINNING LINEUP

Foothill advances to CIF-SS Division 1 final with 4-1 victory against JSerra, will face Santa Margarita in title game. **SPORTS**



ORANGE COUNTY REGISTER

PRICE: \$1 • WEDNESDAY, JUNE 4, 2014 • OCREGISTER.COM

The wealthiest man in L.A., Patrick Soon-Shiong, wants to work with UCI on a digital network

Transforming the judicial system

FIRST STOP? FOSTER CARE



COURTESY OF NANTWORK

The wealthiest man in Los Angeles is looking to team up with UC Irvine's School of Law in hopes of transforming the country's judicial system.



LORI BASHEDA
STAFF WRITER

Patrick Soon-Shiong was on campus recently to receive Law School Dean Erwin Chemerinsky's annual Public Service Award.

Soon-Shiong, whose \$10 billion net worth puts him at No. 130 on Forbes' list of wealthiest humans, made headlines recently for taking the same "giving pledge" made by Bill Gates and War-

ren Buffet. Translation: He has promised to give away at last half of his fortune before he dies.

And one of the latest things Soon-Shiong has expressed interest in spending some of his money on is improving how the courts manage foster children.

First: The backstory.

About eight years ago, Soon-Shiong sat down with former state Sen. Joe Dunn, D-Santa Ana, who at the time

Patrick Soon-Shiong, the wealthiest man in Los Angeles, is teaming up with UCI's School of Law in hopes of revolutionizing the judicial system.

HOW HE GOT RICH

Soon-Shiong, 62, amassed his fortune by developing drugs and surgical procedures for diabetics, along with developing a medication-delivery system for cancer patients.

SEE **FOSTER** • PAGE 12

California Adventure visitors up

Report says first year of Cars Land helps attract nearly 750,000 more.

BY **REBECCA KHEEL** and **SARAH TULLY**
STAFF WRITERS

Buoyed by the first full year of Cars Land operations, Disney California Adventure drew nearly 750,000 more visitors in 2013 compared with the previous year - and has boosted attendance by more than 70 percent since the park opened to a lackluster response more than a dozen years ago.

California Adventure now ranks as 10th-most attended park in the world, according to the latest attendance figures released Tuesday by the Themed Entertainment Association. It's the fourth straight year of overall growth for the

SEE **ENTERTAINMENT** • PAGE 12

INSIDE OCFA CHIEF TO RETIRE

Fire Chief Keith Richter will step down effective Aug. 29.

LOCAL 1

'GO BIG OR GO HOME'

Extravagance is the theme at the Winery in Newport Beach.

FOOD 1

71/59 | 85/59
Coast | Inland

TV • Food 4
Comics • Food 6
Deaths • Local 9
Lottery • News 3
Weather • Local 12

Orange County Register
is a Freedom Communications
newspaper. ©2014

FOUNDED IN 1905

Customer service:
toll free 1-877-
OCR-7009 [627-7009]



STANLEY CUP CHEAT SHEET

Know nothing about the Kings but still want to impress? Read on.

BY **DAVID MONTERO**
STAFF WRITER

Maybe you're one of the millions who didn't see the Los Angeles Kings defeat the Chicago Blackhawks in overtime to advance to the Stanley Cup Final, which starts tonight.

But since Sunday night, when the Kings made a fraction of Southern California gasp, now all you're hearing about are ticket contests and friends changing their Facebook profiles to Kings logos. Your Twitter feed is suddenly populated by Kings

SEE **KINGS** • PAGE 15

STANLEY CUP FINAL

>> Rangers at Kings Game 1: 5 p.m. today at Staples Center
>> KNBC/4
>> Preview in Sports



PRIMARY SUMMARY

Who will oppose Brown for governor?

TOO CLOSE TO CALL

The two leading Republican challengers were locked in a tight race late Tuesday night, with former U.S. Treasury official Neel Kashkari of Laguna Beach holding a narrow lead over Assemblyman Tim Donnelly to determine who will face Gov. Jerry Brown this fall.

News 8

Governor race

Jerry Brown 55%
Neel Kashkari 18%
Tim Donnelly 15%
6,891 of 22,353 precincts reporting

Donnelly Kashkari



CONGRESSIONAL DISTRICT 45

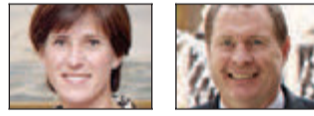
Walters takes race

Republican State Sen. Mimi Walters took a commanding lead Tuesday night over the second-place candidate, Democrat Drew Leavens. The two likely will face off in November, barring an upset.

News 11

Top two advance

Mimi Walters 45.7%
Drew Leavens 29.8%
Greg Rath 22.5%
79 of 485 precincts reporting



Walters

Leavens

BOARD OF SUPERVISORS

Steel, Bartlett ahead in key races

Early returns showed incumbent Shawn Nelson cruising to re-election and avoiding a November runoff in one of three races for the Orange County Board of Supervisors. In two open seats, the leaders were state Board of Equalization member Michelle Steel and Dana Point Mayor Lisa Bartlett.

News 8

2nd district

(Top two advance)
Michelle Steel 47.5%
Allan Mansoor 23.3%
Jim Moreno 21.4%
36 of 423 precincts reporting

5th district

(Top two advance)
Lisa Bartlett 31.1%
Robert Ming 26.7%
Frank Ury 22.5%
26 of 441 precincts reporting

>> Legislative, local race results on Pages 8-11

IN SOCAL



Damon Dunn

Robert Garcia

LONG BEACH MAYOR RACE UNDECIDED

NEWS 8

MORE INSIDE

KEY STATE SENATE RACE: Republican Supervisor Janet Nguyen will likely face Democratic former Assemblyman Jose Solorio in November. The winner will replace term-out Sen. Lou Correa, D-Santa Ana.

NEWS 9
ASSEMBLY: Results for 65th, 73rd and 74th districts. News 9

CUSTOM BLINDS, SHADES, SHUTTERS, & DRAPES

Call To Schedule Your **FREE** In-Home Design Consultation

(949) 226-6544

Ask About Our Special Offer



3DAYBLINDS®
YOU'LL LOVE THE TREATMENT



ENTERTAINMENT: Annual report on theme-park attendance

FROM PAGE 1

theme-park industry after the recession.

Though unofficial, the 8,000-member association's annual report is considered a reliable source among the industry.

Last year, 8.5 million people visited California Adventure, up 9.5 percent from 2012, when the park welcomed 7.8 million visitors. California Adventure is now the sixth-most popular theme park in North America.

And that's all up from California Adventure's opening in 2001, when it attracted 5 million for most of the year, followed by a dip to 4.7 million the following year. The growth has been largely attributed to the June 2012 completion of California Adventure's \$1 billion overhaul, when the immediately popular 12-acre Cars Land opened.

"I think California Adventure is a great example of the impact of capital expenditures and renewals in theme parks," said John Robinett, senior vice president of economics for AECOM, which produces the association's report. "There's a few things that drive attendance in theme parks. Our studies suggest the one controllable factor is capital expenditures and reinvesting in new attractions and shows."

Disney officials declined to comment about the report.

Repeat visitors to Disney California Adventure said they've seen a change in attendance over the years.

Stephanie Zimmerman, who was headed to the park Tuesday for her grandson's first birthday, said she's had Disney annual passes on and off since her now 18-year-old daughter was 2. Zimmerman, a San Diego resident, said she usually goes on weekdays to avoid the crowds.

"It's definitely very popular," she said about Cars Land. "There's always a long line for the main ride there."

Disneyland attendance rose 1.5 percent with 16.2

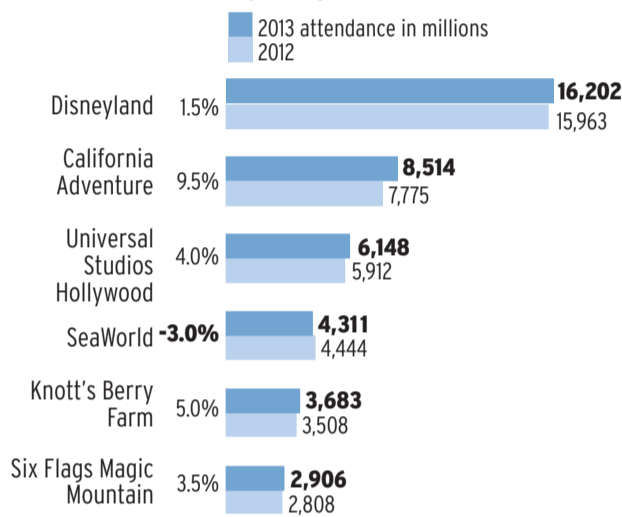


NICK KOON, STAFF PHOTOGRAPHER

Large crowds coming and going at the entrance to Disney's California Adventure. The park now ranks as the 10th-most attended park in the world, according to the latest attendance figures released Tuesday by the Themed Entertainment Association.

More going to theme parks

California Adventure saw an increase in attendance this year by 739,000 visitors. Attendance to the six Disney resorts in the U.S. increased last year by 2,594,000 visitors.



Source: Themed Entertainment Association

STAFF GRAPHIC

million visitors, slipping one slot to become the third-most popular theme park worldwide. Tokyo Disneyland claimed second place while the Magic Kingdom in Walt Disney World maintained its first-place status.

Robinett said the rise in

Tokyo's ranking can be credited to the emerging theme-park market in Asia. "Traditionally, the U.S. has dominated the world league in theme parks, and Asia is definitely in the rear-view mirror right now. It's only a matter of time where Asia surpasses the

U.S. in theme park attendance," he said.

Other Southern California theme parks also saw strong growth in attendance.

- Knott's Berry Farm was up 5 percent, with 3.7 million visitors.
- Knott's Soak City's visits were up 5.1 percent with 368,000 guests.
- Six Flags Magic Mountain was up 3.5 percent, with 2.9 million visitors.
- Universal Studios Hollywood was up 4 percent, with 6.1 million visitors.

Universal Studios is in the middle of a five-year investment plan, including the 2012 addition of Transformers: The Ride 3D. This summer, the Hollywood park added "Despicable Me" attractions.

"We are experiencing new attendance records due to the five-year epic transformation of Universal Studios Hollywood which began in 2012 with the immensely popular Transformers: The Ride 3D," said Larry Kurzweil, president of Universal Studios Hollywood, in a state-

ment.

"We expect to continue this accelerated growth with our new Despicable Me Minion Mayhem adventure ride and immersive Super Silly Fun Land now open."

The only Southern California theme park to take a dip was SeaWorld, which was down 3 percent, to land at 4.3 million. SeaWorld has faced criticism after the airing of "Blackfish," a documentary that slams the park for holding killer whales captive.

SeaWorld officials downplayed the effect of the "Blackfish" movie, saying pricing and weather problems were the chief causes of the attendance drop.

"The decline was primarily attributable to the expected result of planned pricing and yield management strategies that increased revenue but reduced low-yielding and free attendance," SeaWorld spokesman David Koontz said in a statement.

Robinett also said the documentary had "little or no effect" on SeaWorld at-

tendance, saying the drops were tied to price increases and the lack of new attractions.

While California Adventure has skyrocketed in attendance, Universal Studios in Florida posted last year's biggest increase - up 14 percent to 7 million visitors.

Next door, the Islands of Adventure park in Universal Orlando has experienced even bigger jumps since its Harry Potter attractions first opened in 2010 - 76 percent.

The Themed Entertainment Association's roughly 8,000 members come from the theme-park, casino, restaurant, retail, museum and zoo industries. The numbers used in its annual attendance reports come from a variety of sources including the operators, historical numbers, financial reports, the investment banking community and local tourism organizations.

CONTACT THE WRITER:
714-704-3771 or
rkheel@ocregister.com

FOSTER

FROM PAGE 1

had just been appointed chief executive at the California Medical Association. Soon-Shiong wanted to discuss his plans to build a national nonprofit medical database, a sort of information superhighway for health care.

The idea was to help those in the medical world communicate with each other and share information, including patient DNA. It would connect doctors for purposes of clinical trials and treatment.

Today, that health care

superhighway is under construction; a handful of hospitals are involved in the pilot program.

A few years ago, Soon-Shiong went back to Dunn, who was by then the executive director of the California State Bar.

"I think there's another place that needs a grid," Dunn said Soon-Shiong told him. Over lunch, he explained how he wanted to create a judicial database in the vein of the health care superhighway.

The legal world has many neighborhoods: prosecutors, defenders, social services, law enforcement. Often, the people in one neighborhood don't know what the people in the other

hood are up to.

In particular, Soon-Shiong is concerned about the foster care system.

"The statistic is horrific," Soon-Shiong said in a phone interview. "Foster kids, on average, go through seven homes in their lifetime. From court to court and home to home. (Then), at the age of 18, they're thrown into the street."

It's unclear what connection, if any, Soon-Shiong has to the foster care system. An assistant said only "it's just a passion of his," but declined to elaborate.

Still, a bigger question remains: How would digital information help change foster care?

For one thing, the judicial system does not have access to databases that track foster care homes.

"They don't know if someone in a home is a sexual predator," Dunn says. "There's no way for all of them to connect. If we want to solve social problems, one way to do it is to share the data."

Dunn told Soon-Shiong he had an idea: "I need to introduce you to Erwin Chemerinsky."

Chemerinsky is the founding dean of UCI's School of Law. To describe him, Dunn invokes some other big names.

"There are a lot of very talented professionals that in their field are superstars," Dunn says. "There are very few who are able to rise above their own specialty and see how their specialty interacts with other specialties."

A classic example, Dunn says, is Steve Jobs.

"He merged art and technology."

Another example: Patrick Soon-Shiong.



COURTESY OF UCI

Patrick Soon-Shiong is presented with the Public Service award by UCI Law School Dean Erwin Chemerinsky during the school's Public Service Awards Dinner.

"He took his knowledge in medicine and merged it with technology as a way of affecting the world at large."

Dunn puts Dean Chemerinsky in the same company.

"While he is one of the greatest scholars of constitutional law, he has the rare ability to see how law is super-connected to so many other disciplines in life; to improve society at large," Dunn says.

A meeting was set. The three men gathered in an office building in Costa Mesa that was at the time owned by Soon-Shiong. He and Chemerinsky brainstormed on a massive whiteboard.

"In all honesty, this was a great joy to sit and watch these brilliant individuals merge their lives in a way that, frankly, if done, will have a massively positive benefit," Dunn says. "They filled every space on that whiteboard."

The mind meld led to an idea to create a judicial in-

novation institute where data could be aggregated and then researched to develop public policy proposals, starting with the foster care system.

"I wanted to explore with UCI law school a way to create an environment ... to solve some of these issues that plague ... a whole generation of these children," Soon-Shiong says.

Chemerinsky was impressed with Soon-Shiong and his goals.

"Wouldn't it be great to create a think tank that would do cutting edge research on how to improve the administration of the courts?" Chemerinsky asks.

Soon-Shiong said an initial vision to do just that, to establish such an organization in Costa Mesa, "didn't pan out."

Discussions, however, are continuing.

"With Joe's help and Erwin's help, I'm sure this can be done," Soon-Shiong told the crowd gathered to honor him May 16 for his contri-

butions to UCI. "There is an opportunity for us to really make a difference ... And, most importantly, create collaboration."

Dunn said they are in "wait mode."

"A number of factors need to come together to make this a possibility," says Dunn. "We are hopeful that the future will bring the creation of a judicial institute."

It is a departure for Soon-Shiong, who typically pours his money into health care. He and his wife Michele gave \$100 million to rescue the beleaguered Martin Luther King Jr. Hospital in South Los Angeles, \$135 million to St. John's Health Center in Santa Monica and \$4 million last fall to the University of California's Global Health Initiative.

A surgeon by trade, Soon-Shiong made his fortune developing drugs and surgical procedures for diabetes, as well as a medication-delivery system for cancer patients.

But a justice institute is in keeping with his theme of establishing "programs, rather than buildings."

Soon-Shiong's foundation motto: "It's not a handout, it's a hand in."

"I really mean that," he says. "It's very important to create systems that are sustainable."

Soon-Shiong, now 62 and a father of two, was born to a Chinese village doctor in apartheid South Africa. It was a world, he says, "where people were poor and people were underdogs and underserved."

He was one of those people.

CONTACT THE WRITER:
lbashida@ocregister.com

FIRST FINANCIAL GROUP

The Original CD Locator and Financial Service Co.™

Trusted Since 1985

CHECK OUT OUR GREAT RATES

MONEY MARKET	BUSINESS CHECKING	6 MONTH CD
1.25% ^{APY}	1.05% ^{APY}	4.30% ^{APY}

Insured & Guaranteed



Ask About Our IRAs

Huntington Beach, CA 92647

Laguna Hills, CA 92653

714-274-0242 949-587-0881

Annual Percentage Yield. Yield and deposit amount subject to availability. Penalty for early withdrawal. *Promotional Incentive included to obtain yield. Certain restrictions apply. Rates may vary depending on deposit amount. All Bank Accounts Are FDIC Insured. Lic #0043831 (Huntington Beach) and Lic #0817691 (Laguna Hills).